

PROACT.®

REFERENCE : PA439

SIZES : XS_S_M_L_XL_XXL

COMPOSITION :

Main fabric : Polyester birdseye - 140 100%polyester

WEIGHT :

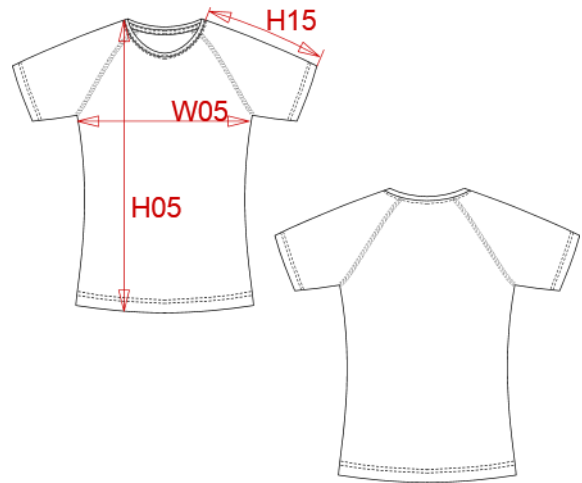
Main fabric : 140 gsm

TECHNICAL DETAIL :

Quick dry fabric

ARTICLE WEIGHT :

100gr/pc



DESCRIPTION								COLORS		PANTONE SERIGRAPHIE	
Français : T-shirt femme manches courtes								White	White		
English : Ladies short sleeve T-shirt								Red	186C		
Nederlands : Dames T-shirt met mouwen								Black	Black		
Deutsch : Polyester T-shirt für Damen								Lime	367C		
Español : Camiseta de manga corta para mujer								Orange	1585C		
Italiano : T-shirt donna maniche corte								Aqua blue	7690C		
Português : T-shirt de denhora de manga curta								Sand	4755C		
MEASUREMENT								Olive	7770C		
Description	XS	S	M	L	XL	XXL		Sky blue	283C		
H05 (L) Hauteur totale / Total height	62	64,25	66,50	68,75	71	73,25		Fine grey	877C		
W05 (L) 1/2 largeur poitrine à 1.5cm de l'emmanchure / 1/2 chest width at 1.5cm below armhole	42	45	48	51	54	57		True Yellow	116C		
H15J (L) Longueur manche courte raglan / Raglan short sleeve length	26	27,75	29,50	31,25	33	34,75		Violet	7672C		
CARE LABEL								Dark pink	494C		
								Fluorescent yellow	-		
								Fluorescent orange	-		
								Fluorescent pink	-		
								Sporty navy	7546C		
								Sporty royal blue	647C		
								Fuchsia	7425C		
								Kelly green	7727C		
								Wine	504C		
PACKING											
Box	50 pcs / box XS=> L:45cm W:33cm H:19.5cm GW:5.60kg NW:4.60kg S=> L:47cm W:34cm H:19.5cm GW:5.70kg NW:4.70kg M=> L:49cm W:35cm H:19.5cm GW:6.00kg NW:5.00kg L=> L:52cm W:36cm H:19.5cm GW:6.50kg NW:5.50kg XL=> L:55cm W:38cm H:19.5cm GW:7.00kg NW:5.90kg										